



A1	SOUTH ELEVATION
A2	NORTH ELEVATION
A3	ISLAND ELEVATIONS

A4	DIMENSION PLAN
A5	BASE CABINETS
A6	WALL CABINETS

A7	COUNTER TOPS
A8	GENERAL DEMOLITION
A9	GENERAL CONSTRUCTION

E1	EXISTING ELECTRICAL
E2	PROPOSED ELECTRICAL
E3	LIGHTING AND SWITCHES

F1	FLOORING
F2	FLOORING
P1	PLUMBING

## TABLE OF CONTENTS



1033 HAZEL ST., OSHKOSH, WI  
 DECEMBER 5, 2023  
 SCALE: 1/2" = 1'0" (PRINTED 11 X 17)

APEX HOME REMODELING  
 1349 W. 18TH AVENUE, OSHKOSH, WI 54902  
 (920) 522-2334 JEFF@APEX-REM.COM

TABLE OF CONTENTS  
 KITCHEN REMODELING

A0

W38.5 24B 29 DP

W28.25 42B

W3442B

W3442B

GLASS  
LEAF

REPS 29X96  
3/4" THICK  
PANEL

TILE BACK SPLASH

36" FRIDGE

B3D32.25  
SILVERWARE  
ORGANIZER

SB 36 - SINK BASE  
SINK - MAT

DISHWASHER

B48  
4 PULL OUTS (DRAWERS)

SOUTH ELEVATION

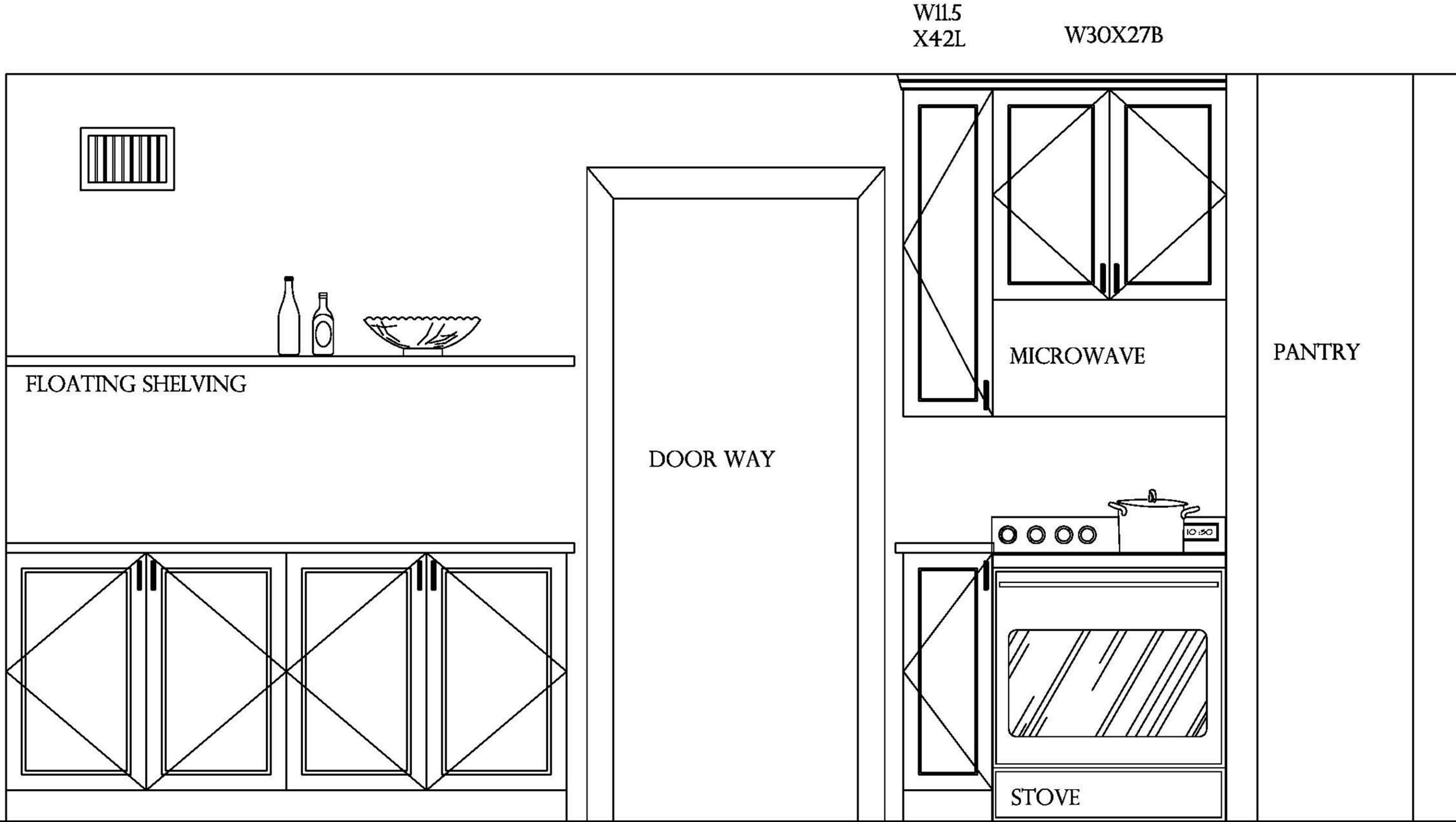


1033 HAZEL ST., OSHKOSH, WI  
DECEMBER 5, 2023  
SCALE: 3/4" = 10" (PRINTED 11 X 17)

APEX HOME REMODELING  
1349 W. 18TH AVENUE, OSHKOSH, WI 54902  
(920) 522-2334 JEFF@APEX-REM.COM

SOUTH ELEVATION  
KITCHEN REMODELING

A1



BFH36B 12DP  
SHELVING

BFH36B 12DP  
SHELVING

B11.5L  
WIRE DIVIDERS

NORTH ELEVATION

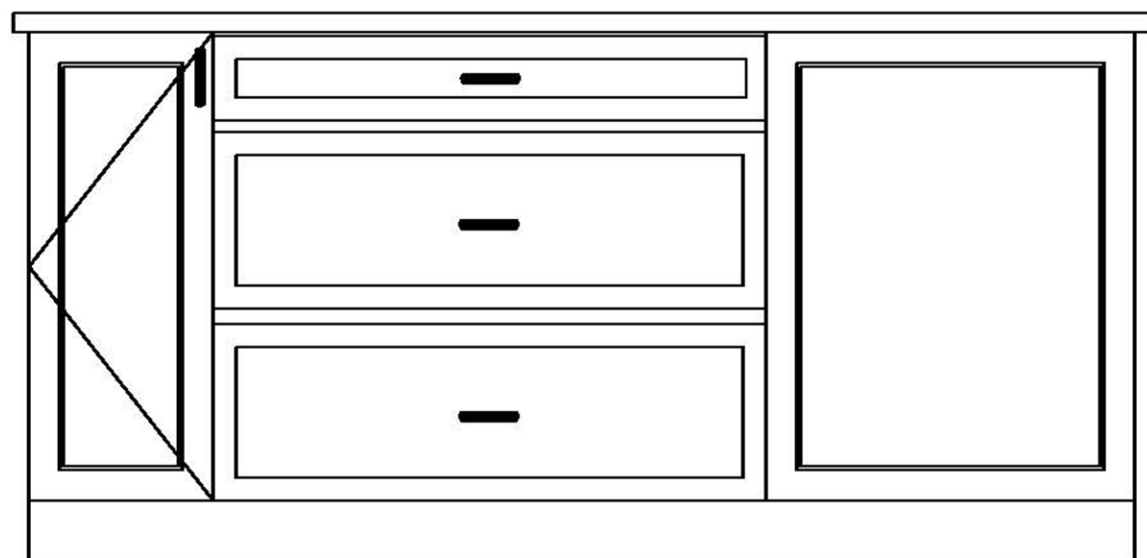


1033 HAZEL ST., OSHKOSH, WI  
DECEMBER 5, 2023  
SCALE: 3/4" = 10" (PRINTED 11 X 17)

APEX HOME REMODELING  
1349 W. 18TH AVENUE, OSHKOSH, WI 54902  
(920) 522-2334 JEFF@APEX-REM.COM

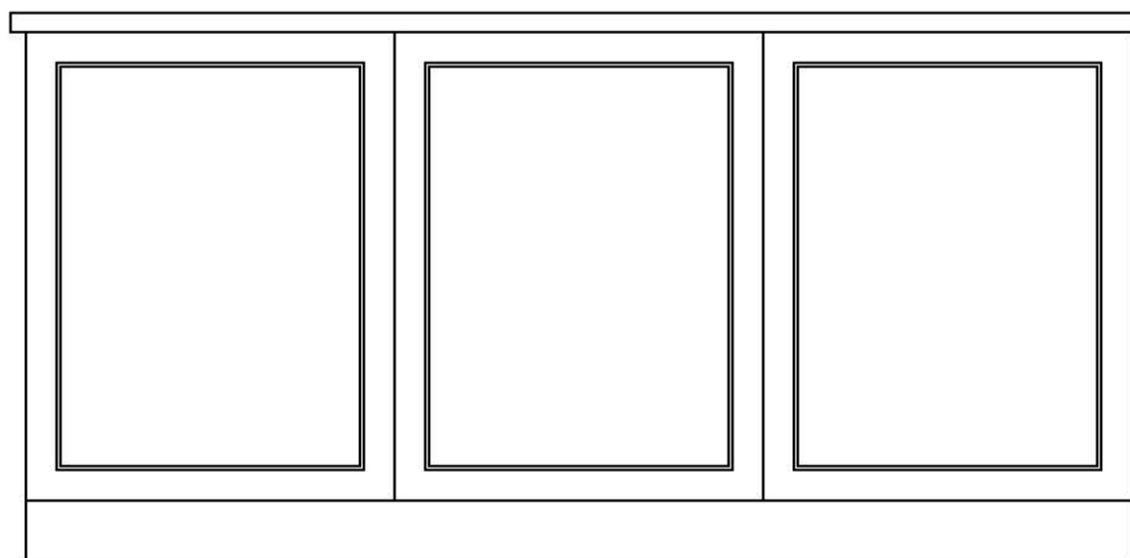
NORTH ELEVATION  
KITCHEN REMODELING

A2



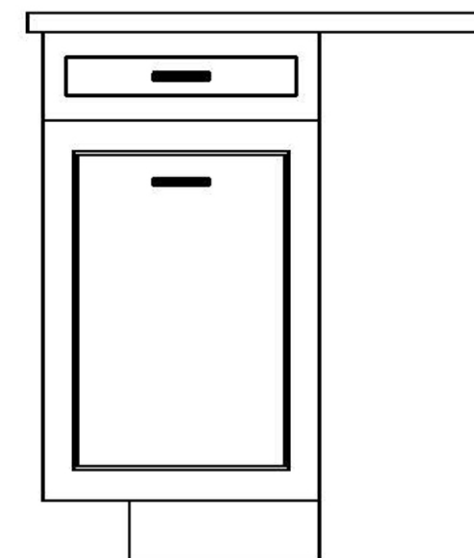
BFH12 18DP      B3D36 18DP      SIDE PANEL  
 PULL OUT      3 DRAWERS  
 VERTICAL      DIVIDERS

NORTH ELEVATION



72" X 34.5 - WAINSCOT PANEL

SOUTH ELEVATION



B18 DBL WASTE

EAST ELEVATION

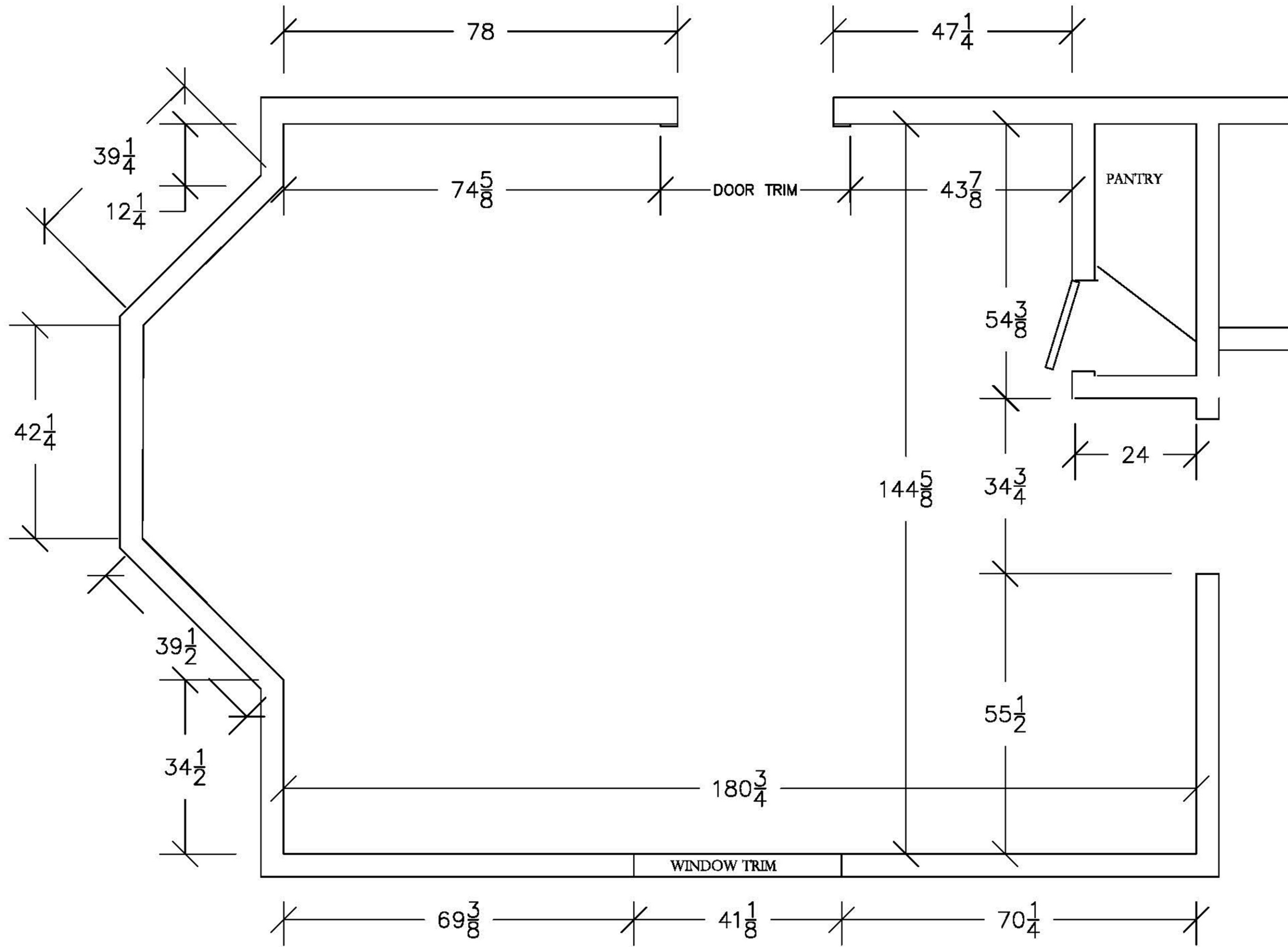
ISLAND ELEVATIONS



1033 HAZEL ST., OSHKOSH, WI  
 DECEMBER 5, 2023  
 SCALE: 3/4" = 10" (PRINTED 11 X 17)

APEX HOME REMODELING  
 1349 W. 18TH AVENUE, OSHKOSH, WI 54902  
 (920) 522-2334 JEFF@APEX-REM.COM

ISLAND ELEVATIONS  
 KITCHEN REMODELING  
 A3



DIMENSION PLAN

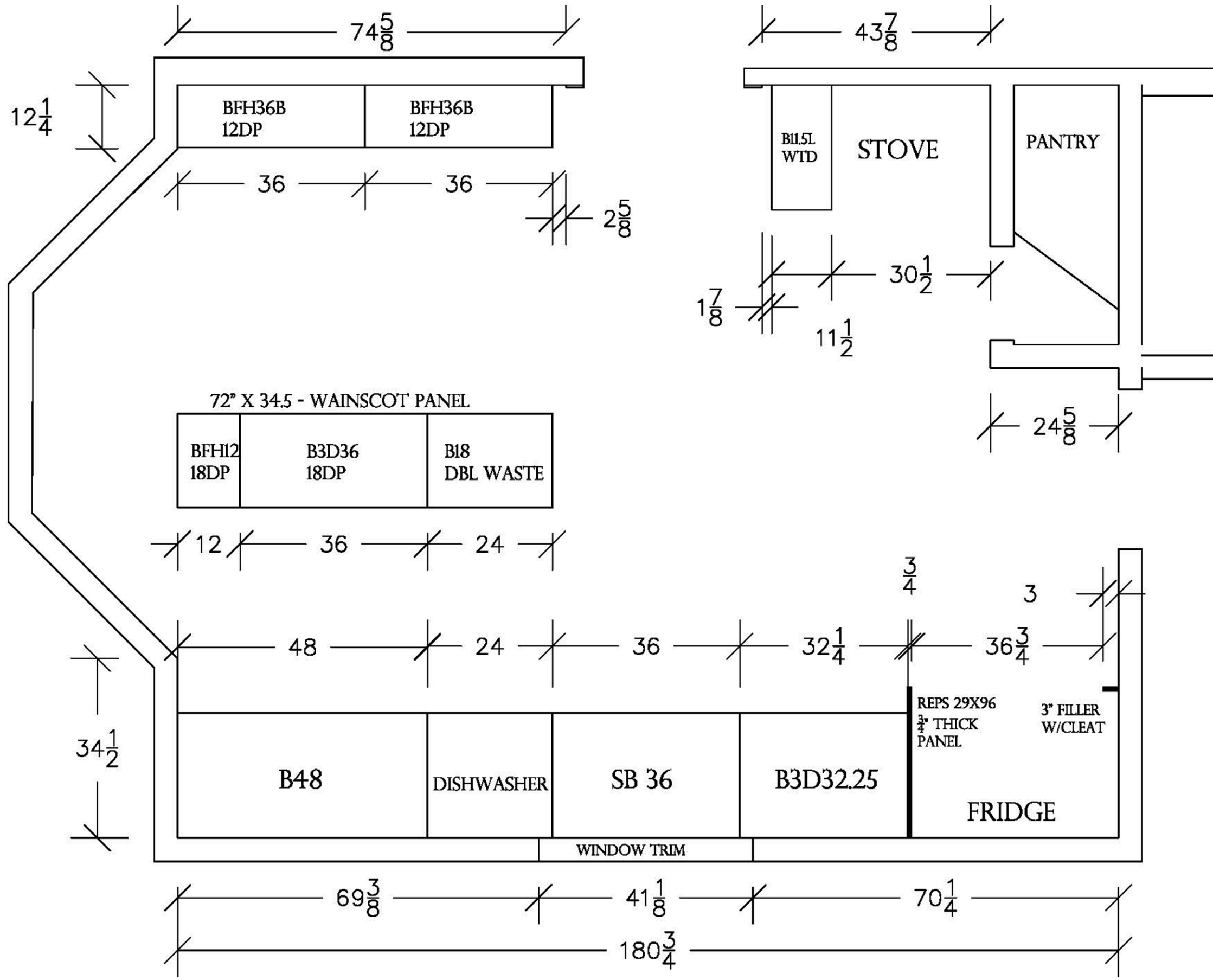


1033 HAZEL ST., OSHKOSH, WI  
 DECEMBER 5, 2023  
 SCALE: 1/2" = 1'0" (PRINTED 11 X 17)

APEX HOME REMODELING  
 1349 W. 18TH AVENUE, OSHKOSH, WI 54902  
 (920) 522-2334 JEFF@APEX-REM.COM

DIMENSION PLAN  
 KITCHEN REMODELING

A4



BASE CABINETS

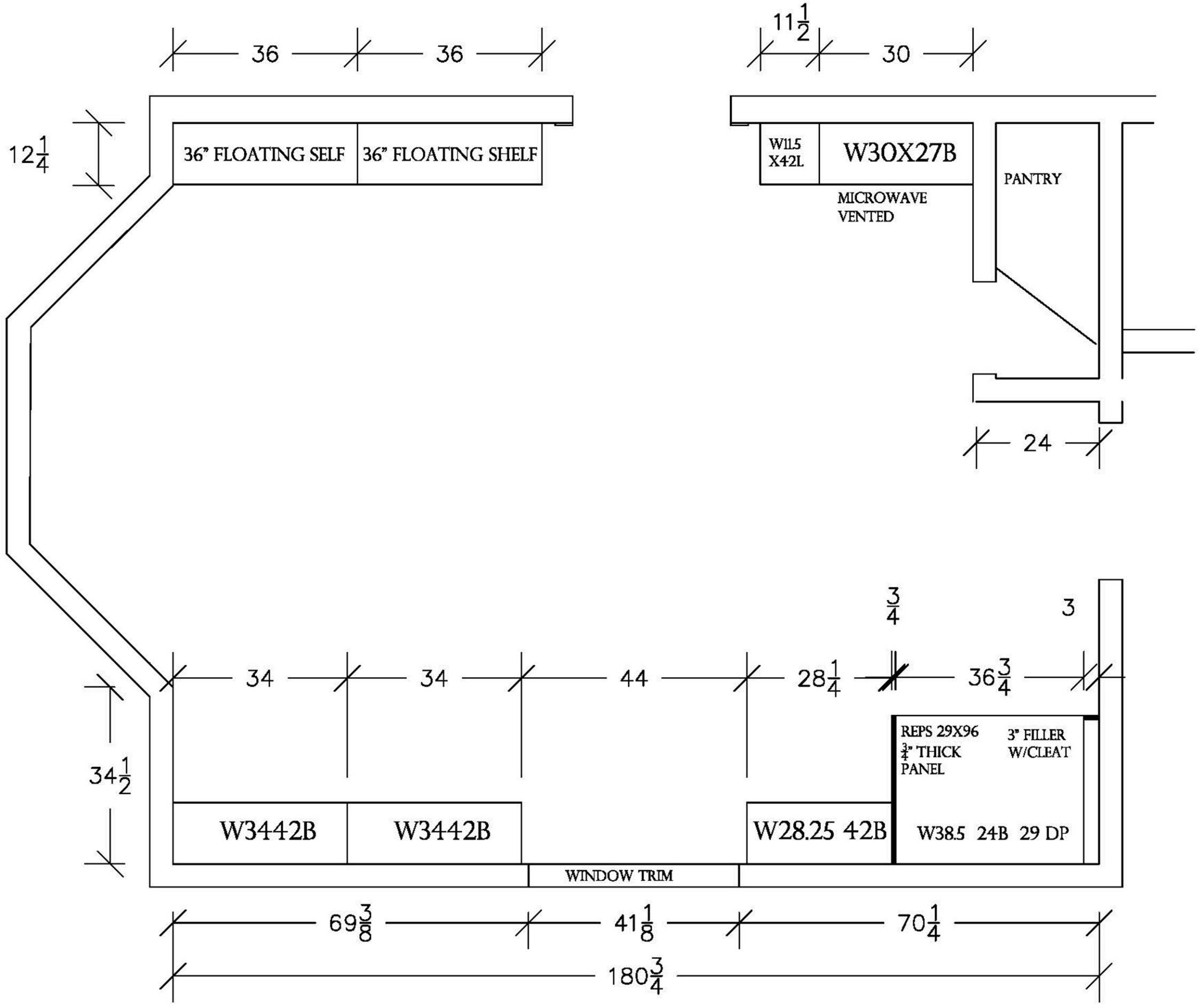


APEX HOME REMODELING  
 1349 W. 18TH AVENUE, OSHKOSH, WI 54902  
 (920) 522-2334 JEFF@APEX-REM.COM

1033 HAZEL ST., OSHKOSH, WI  
 DECEMBER 5, 2023  
 SCALE: 1/2" = 1'0" (PRINTED 11 X 17)

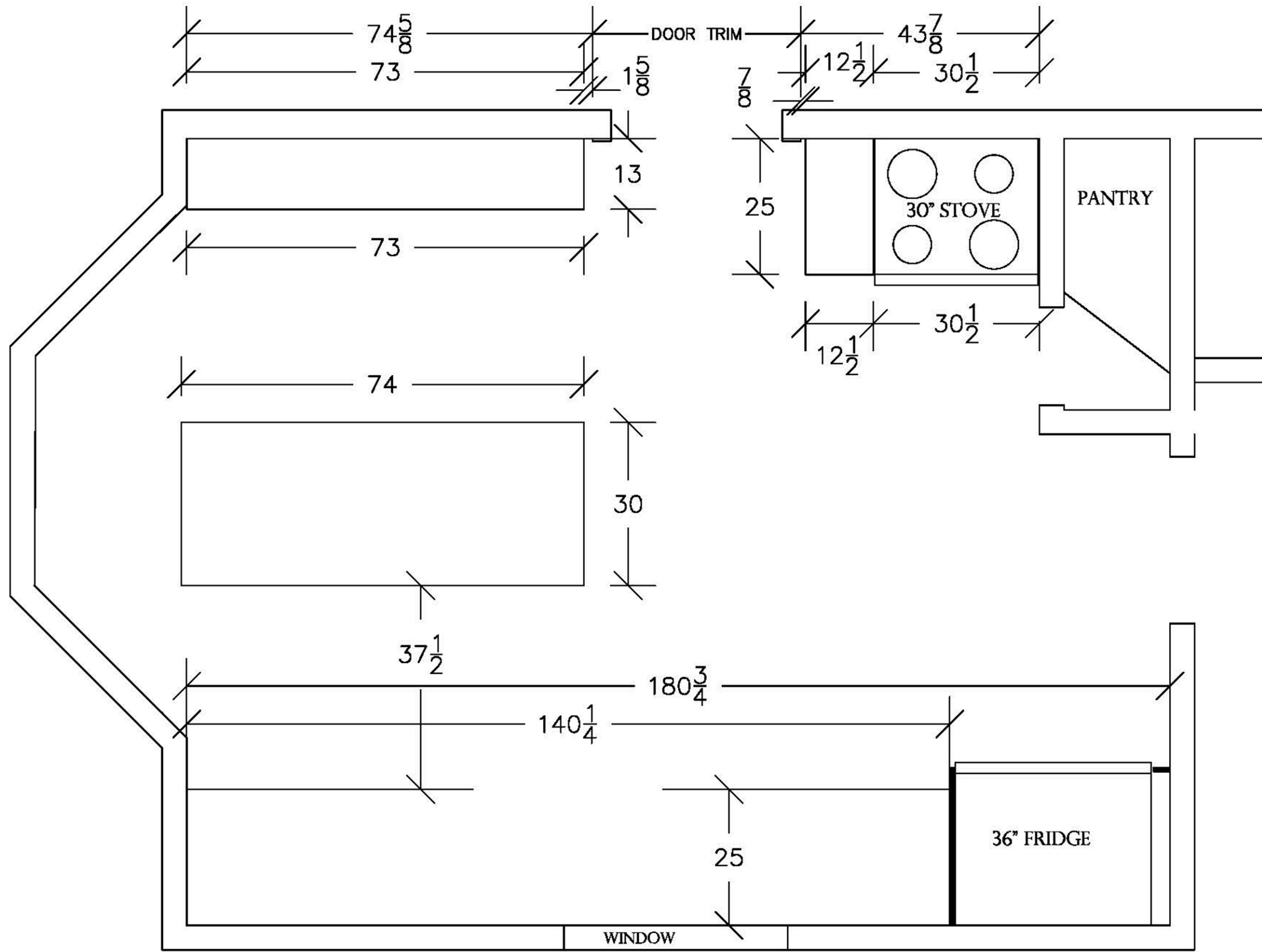
BASE CABINETS  
 KITCHEN REMODELING

A5



WALL CABINETS

WALL CABINETS	KITCHEN REMODELING
1033 HAZEL ST., OSHKOSH, WI DECEMBER 5, 2023	APEX HOME REMODELING 1349 W. 18TH AVENUE, OSHKOSH, WI 54902 (920) 522-2334 JEFF@APEX-REM.COM
SCALE: 1/2" = 1'0" (PRINTED 11 X 17)	
<b>A6</b>	



COUNTER TOPS



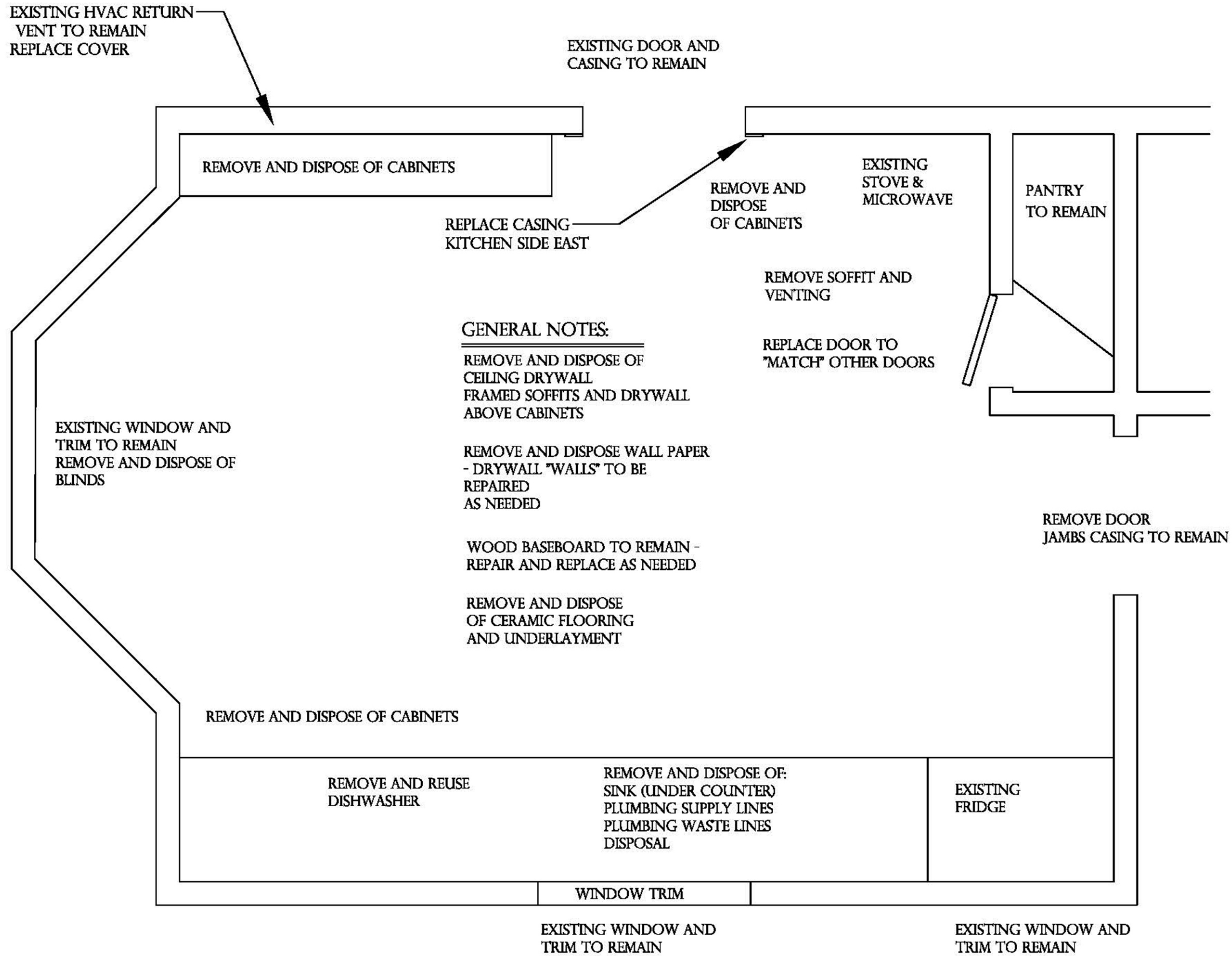
1033 HAZEL ST., OSHKOSH, WI  
 DECEMBER 5, 2023  
 SCALE: 1/2" = 1'0" (PRINTED 11 X 17)

APEX HOME REMODELING  
 1349 W. 18TH AVENUE, OSHKOSH, WI 54902  
 (920) 522-2334 JEFF@APEX-REM.COM

COUNTER TOPS  
 KITCHEN REMODELING

A7





GENERAL DEMOLITION

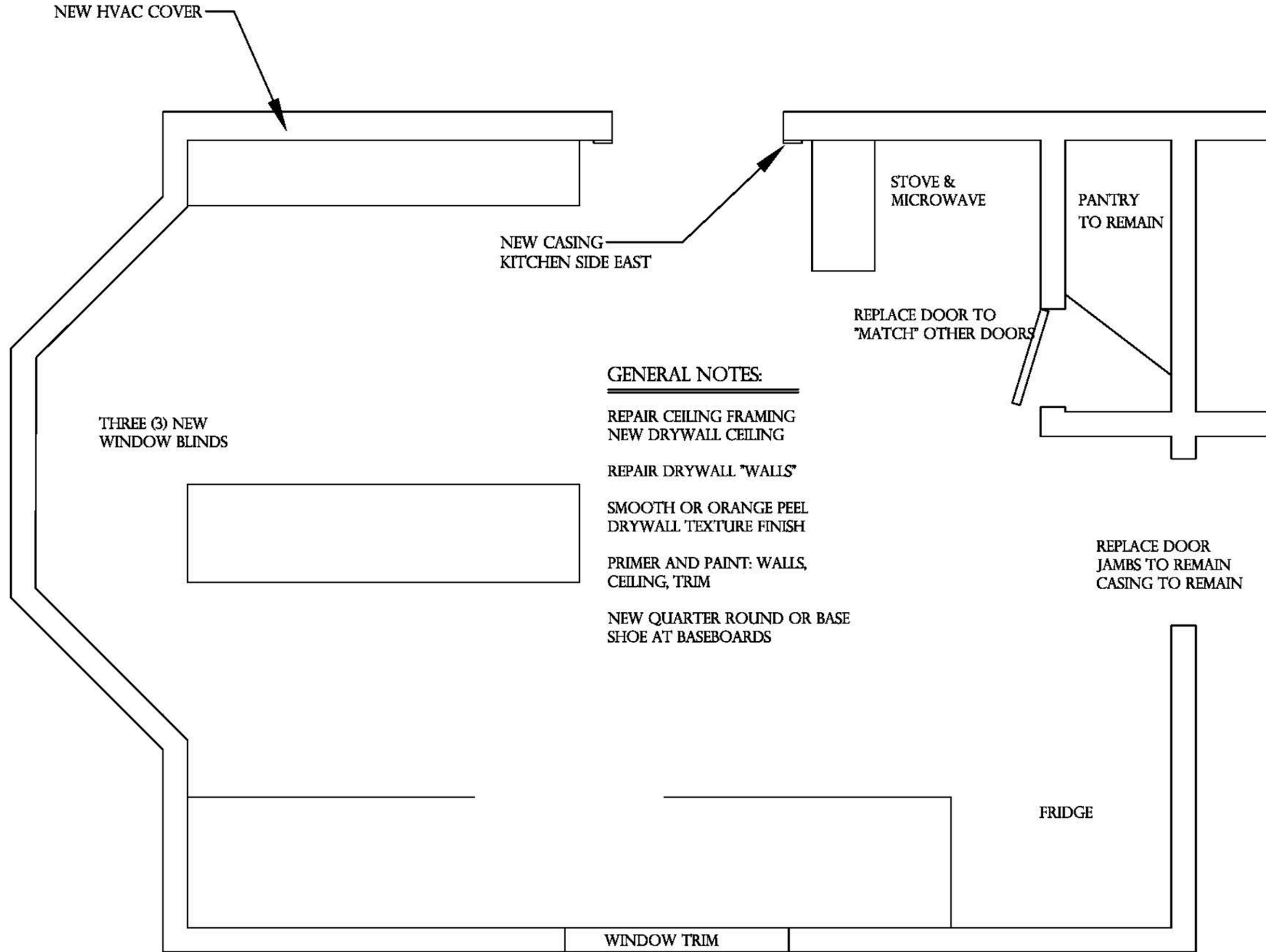


1033 HAZEL ST., OSHKOSH, WI  
 DECEMBER 5, 2023  
 SCALE: 1/2" = 1'0" (PRINTED 11 X 17)

APEX HOME REMODELING  
 1349 W. 18TH AVENUE, OSHKOSH, WI 54902  
 (920) 522-2334 - JEFF@APEX-REM.COM

GENERAL DEMOLITION  
 KITCHEN REMODELING

A8



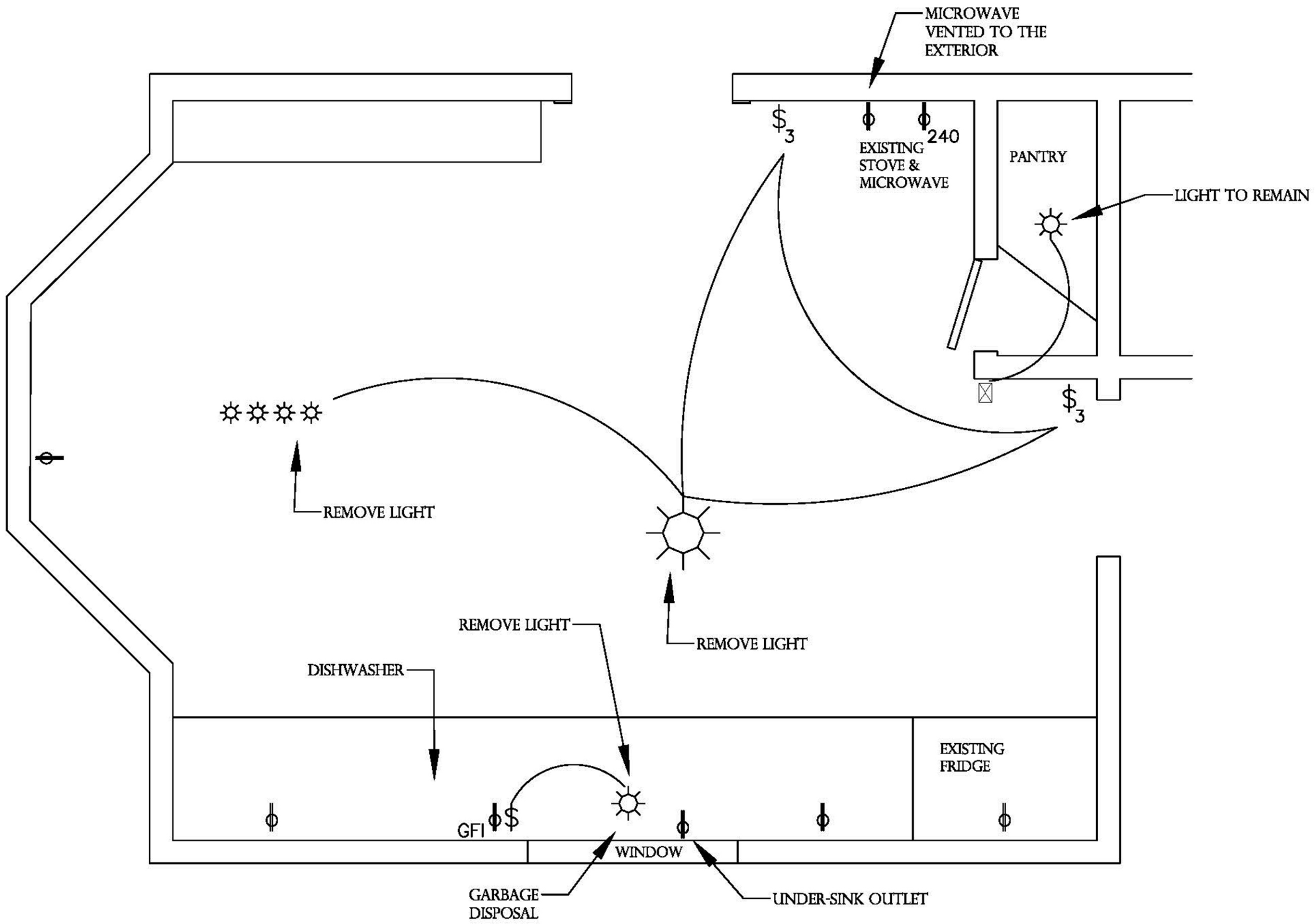
APEX HOME REMODELING  
1349 W. 18TH AVENUE, OSHKOSH, WI 54902  
(920) 522-2334 JEFF@APEX-REM.COM

1033 HAZEL ST., OSHKOSH, WI  
DECEMBER 5, 2023  
SCALE: 1/2" = 1'0" (PRINTED 11 X 17)

GENERAL CONSTRUCTION  
KITCHEN REMODELING

A9

GENERAL CONSTRUCTION



EXISTING ELECTRICAL



1033 HAZEL ST., OSHKOSH, WI  
 APEX HOME REMODELING

DECEMBER 5, 2023

1349 W. 18TH. AVENUE, OSHKOSH, WI 54902

SCALE: 1/2" = 1'0" (PRINTED 11 X 17)

(920) 522-2334 JEFF@APEX-REM.COM

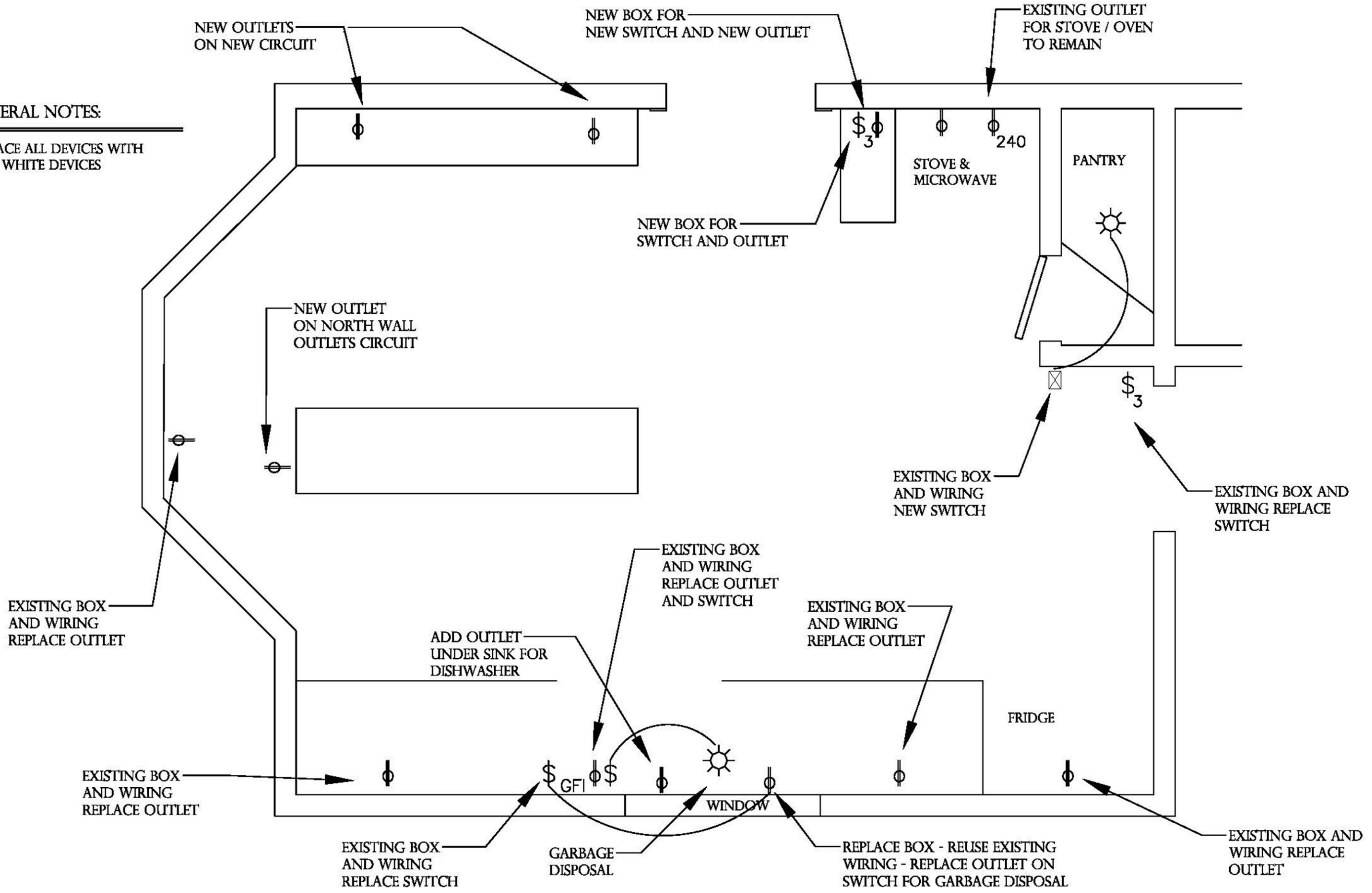
EXISTING ELECTRICAL

KITCHEN REMODELING

E1

**GENERAL NOTES:**

REPLACE ALL DEVICES WITH  
NEW WHITE DEVICES



**PROPOSED ELECTRICAL**



APEX HOME REMODELING  
1349 W. 18TH AVENUE, OSHKOSH, WI 54902  
(920) 522-2334 JEFF@APEX-REM.COM

1033 HAZEL ST., OSHKOSH, WI  
DECEMBER 5, 2023  
SCALE: 1/2" = 1'0" (PRINTED 11 X 17)

PROPOSED ELECTRICAL  
KITCHEN REMODELING  
E2